

Welch Allyn RetinaVue™ Network

Diabetic retinopathy
screening made
SIMPLE and
AFFORDABLE
for primary care



Diabetic retinopathy is the leading cause of blindness among working-age adults.

Less than
50%

Documented compliance with annual retinal exams is often less than 50%.

95%
Prevention

With early detection, 95% of vision loss cases can be prevented.



Now you can easily and accurately screen for diabetic retinopathy using a **SIMPLE and EFFECTIVE** four-step process.



Welch Allyn RetinaVue™ 100 Imager

BREAKTHROUGH CAMERA TECHNOLOGY IS LOW COST AND EASY TO USE

- One-third the cost of full-size fundus cameras
- Touchless auto-focus and image capture support ease of use
- Automatic evaluation of image helps ensure quality
- Fast, non-mydriatic exam promotes patient comfort

RetinaVue Network is designed for healthcare providers who want to improve management of their patients with diabetes.

Acquire

Acquire non-mydratric fundus images **in minutes** with the simple, automated Welch Allyn RetinaVue 100 Imager

Transfer

Encrypted images sent via secure **HIPAA-compliant** RetinaVue Network

Analyze

Images are evaluated by a **board-certified retinal specialist**

Report

Diagnostic report and referral/screening plan **returned the same day**
—usually in 90 minutes

PATIENT COMPLIANCE RATES CAN DOUBLE IN 12 MONTHS

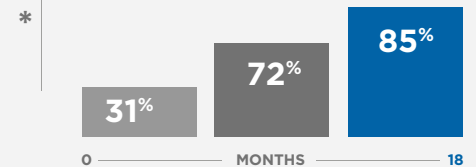
Single Primary Care Clinic Retinal Assessment Compliance Results using the RetinaVue Network

Garg S, Jani PD, Kshirsagar AV, King B, Chaum E. Telemedicine and Retinal Images for Improving Diabetic Retinopathy Evaluation. Arch Intern Med. 2012; Oct 1: 1-2.

* Patients with a Documented Retinal Assessment, %

COMPLIANCE STUDY CHART

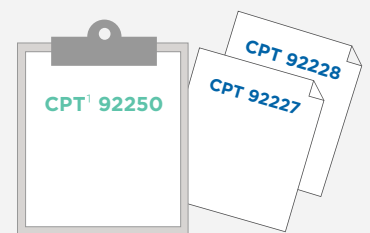
Compliance %



MOST TOP HEALTHCARE PLANS REIMBURSE FOR SCREENINGS

Four of the top five healthcare plans provide coverage for RetinaVue diabetic retinopathy screening. Consult your payer partners to understand coding and coverage options.

¹ CPT ©2015, American Medical Association



IMPROVE QUALITY METRICS AND REVENUE

Annual retinal examinations are included in the NCQA HEDIS ratings program, the Medicare Advantage “Stars” quality rating program and Medicare quality rating programs.





Diagnostic interpretation services are a required component of the RetinaVue Network and are contracted directly with RetinaVue PC



Diagnostic interpretation and electronic report turned around same day. Average time: 90 minutes

Diagnostic report includes retinal images and contains all relevant ICD codes

Referral/Screening plan clearly details next steps

Comments, signature and license number from fellowship-trained retinal specialist

WelchAllyn

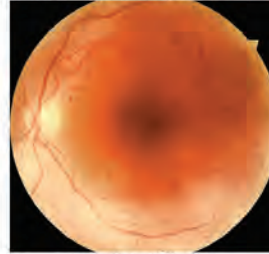
RetinaVue™ Network
Diagnostic Report

Patient Information

Name: Smith, Mary
Medical Record Number: 512124
Date of Birth: 8/14/1970
Referring Physician: William Brown, MD
Referring Clinic: Primary Care Associates

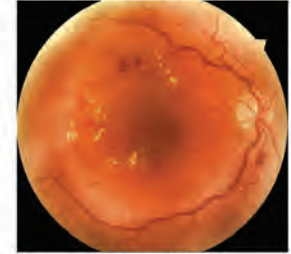
Retinal Image Assessment and Management Plan

Fundus Photograph of Left Eye (OS):



Diagnosis for Left Eye (OS):
NPDR Moderate with CSME

Fundus Photograph of Right Eye (OD):



Diagnosis for Right Eye (OD):
NPDR Severe with CSME

ICD-10 Diagnosis Codes:

E11.331 Type 2 diabetes mellitus with moderate nonproliferative diabetic retinopathy with macular edema
E11.341 Type 2 diabetes mellitus with severe nonproliferative diabetic retinopathy with macular edema

Recommendation and Management Plan:

Refer to a retina specialist for evaluation of evidence of severe diabetic eye disease.

Comments:

None

Reviewing Physician: John Doe, MD
TN License Number: 654321
Report Generated on: 12/16/2015

*This report is created by RetinaVue, P.C. through its licensed and board-certified retinal specialists. The report identifies the presence of disease in the posterior pole of the retina for diagnostic, management and referral purposes. It does not take place of a regular eye examination for the purpose of assessing the presence of glaucoma, cataract, retinal degeneration, peripheral retina disease or other possible vision-threatening conditions. For customer support, please call 1 800 521 0822 Option 2, 1, 3.

Ordering Information



RV100-B*

RetinaVue 100 Imager



723427*

TopCon® TRC NW-400
Retinal Camera



723480

K2 Camera Table



723481

Lenovo® Thinkpad

* RetinaVue Network software is shipped with either camera. System requirements: Windows 7, Windows 8.1, Windows 10 on latest SP; RAM 2 GB min; CPU 2 GHz or equivalent; 150 MB free HDD space; high speed internet connection; USB port (for RV100-B); Ethernet port (for 723427)

Welch Allyn **VISION FOR ALL**

Delivering simple and affordable screening solutions in primary care settings to help eradicate some of the leading causes of preventable blindness.

Welch Allyn, Inc.
4341 State Street Road
Skaneateles Falls, NY 13153 USA
(p) 800.535.6663 (f) 315.685.3361

WWW.WELCHALLYN.COM

© 2016 Welch Allyn MC13062 80021011 Ver A 2016-02

