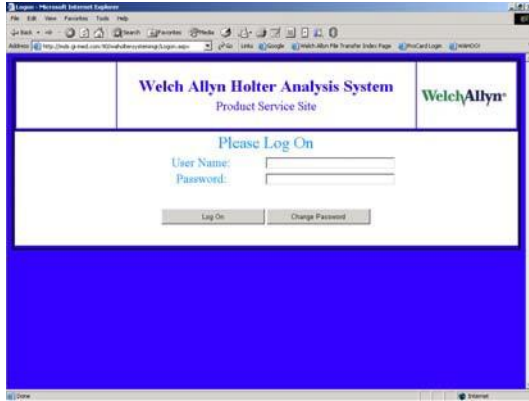


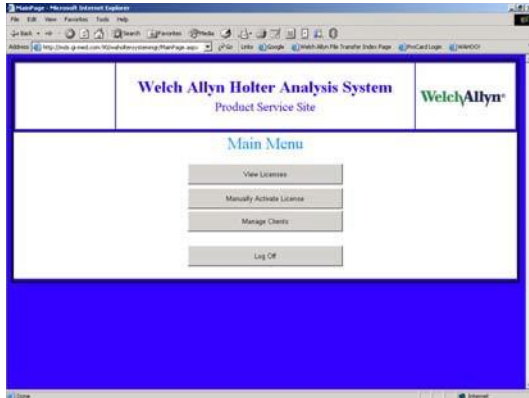
PCH100/PCH200 Software Manual Activation Process

This document will show how to Log on to an Internet website and activate a PCH100 or PCH200 Software License.

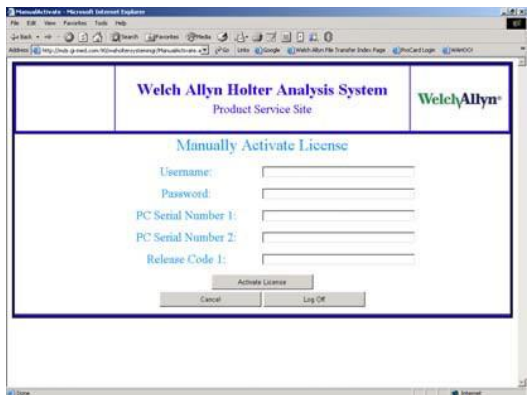
1. Open your browser and go to the web address below. Once you are there add the site to your favorites. This will provide quicker access this site in the future. <http://mds.gi-med.com/waholtersystemmgr/Logon.aspx>



2. Enter the your User Name and Password and click Log On to access to the Main menu.



3. Click the Manually Activate License button



4. In this screen you are able to activate a License by using the information provided from a form printed by the software or directly from the screen if they do not have Internet connection or did not wish to do it automatically.

Sample of form printed from the Software:

WA Holter System WelchAllyn®

Manual Activation Information Sheet

Username:	2083
Password:	PCH78546
PC Serial Number 1:	262364295
PC Serial Number 2:	1592572316

Contact Welch Allyn Technical Support:

USA	+1 800 535 6963	Canada	+1 800 561 8757
Australia	+1 315 686 4560	China	+86 21 6327 9631
France	+33 1 55 69 58 40	European Call Center	+353 46 90 67790
Germany	+49 674 750	Germany	+49 677 9271 70
Japan	+81 3 3219 0571	Latin America	+1 305 969 9053
Netherlands	+31 157 505 520	United Kingdom	+44 207 365 6780
South Africa	+27 11 777 7655	Singapore	+65 6419 8100
		Sweden	+46 85 963 6661

5. Using information provided by the customer enter the information into the fields provided. Once you have entered the 2nd Serial Number click Activate License. This will generate a sequence of numbers in the Release Code field that needs to be provided to the customer to activate their software.
6. This number also needs to be copied and entered into the Notification for traceability.