

Starting a Test with a HR100 recorder –

Wireless for Previewing the ECG

1. Prepare the patient – prep the skin, connect electrodes to lead wires and place the electrodes in the appropriate locations

CH1+ – Red

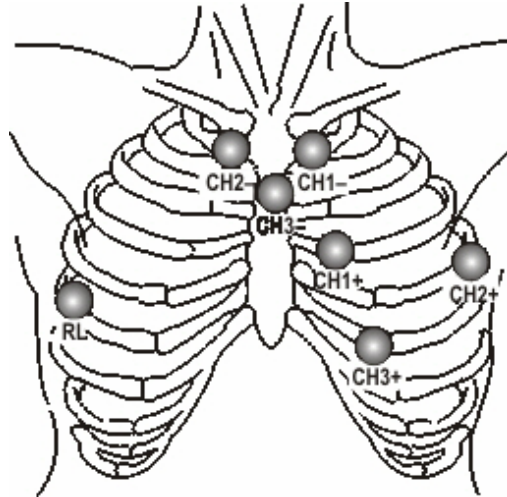
CH1- – White

CH2+ – Brown

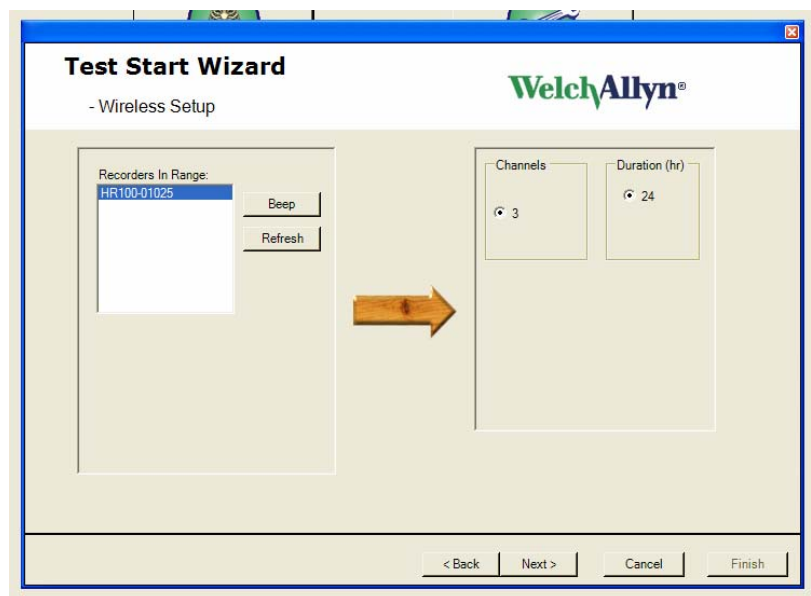
CH2- – Black

CH3+ – Orange

CH3- – Blue

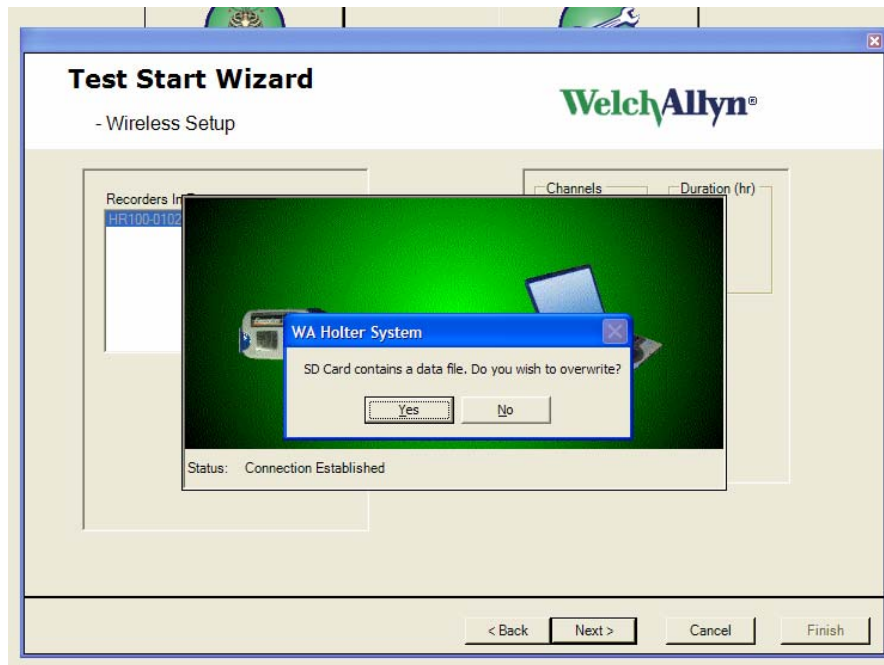


2. Remove the battery door
3. Insert an SD card into the recorder
4. Insert a fresh battery – when the light on the recorder flashes yellow 2 times in close sequence proceed to the next step
5. Start the Holter software application and select “Test Startup”
6. Enter patient information as desired. If this test has a previous recording, use search to find the patient information. Select “NEXT”.
7. Wait for approximately 20 seconds for the serial number of the recorder to appear in the “Recorders in Range” window. Highlight and select “NEXT”.
Note: if no number appears, select “Refresh”.

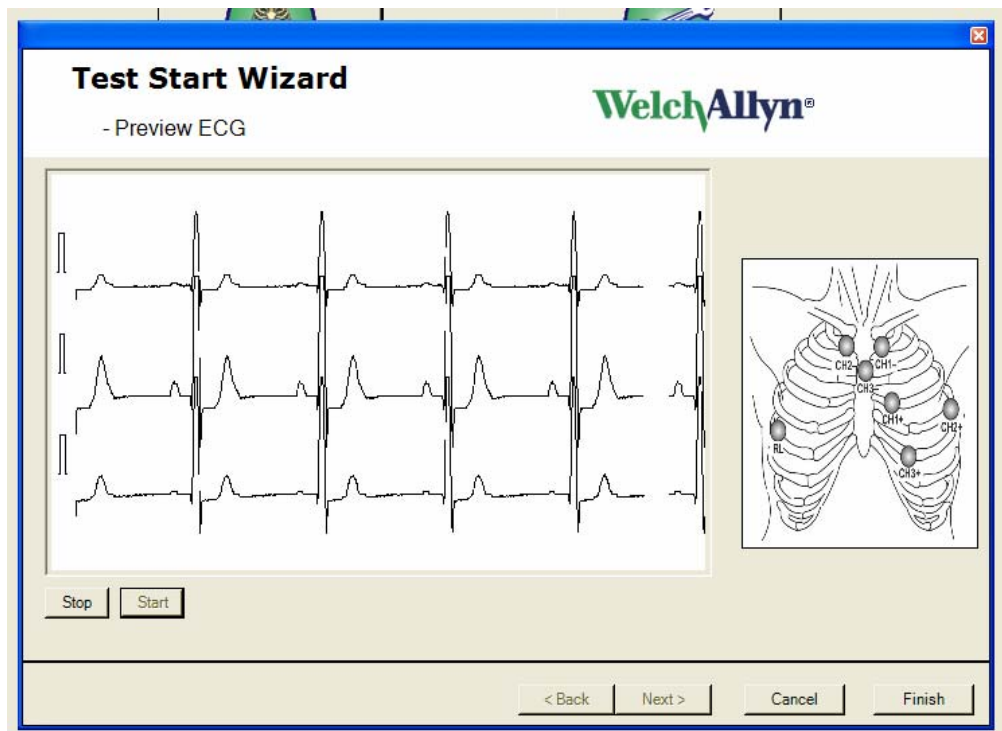


PCH 100 Abbreviated Directions for Use

8. This screen will ask you to verify that the previously recorded test on this SD card has been downloaded. Select "YES"



8. Verify signal quality, i.e. amplitude and artifact



Patient Returns with Holter Recording Completed

1. Open recorder door and remove battery before SD card!
2. Remove SD card from recorder
3. Insert SD card into the SD card reader connected to the computer (Holter software application must be running)
4. The recorded test information will be downloaded and analyzed automatically. Monitor the progress in the lower right hand corner of your screen.
5. Note: For the first transfer or if the SD card reader has been move, it may be necessary to double click on the SD card reader ICON in the bottom right corner of the screen and browse to the respective drive