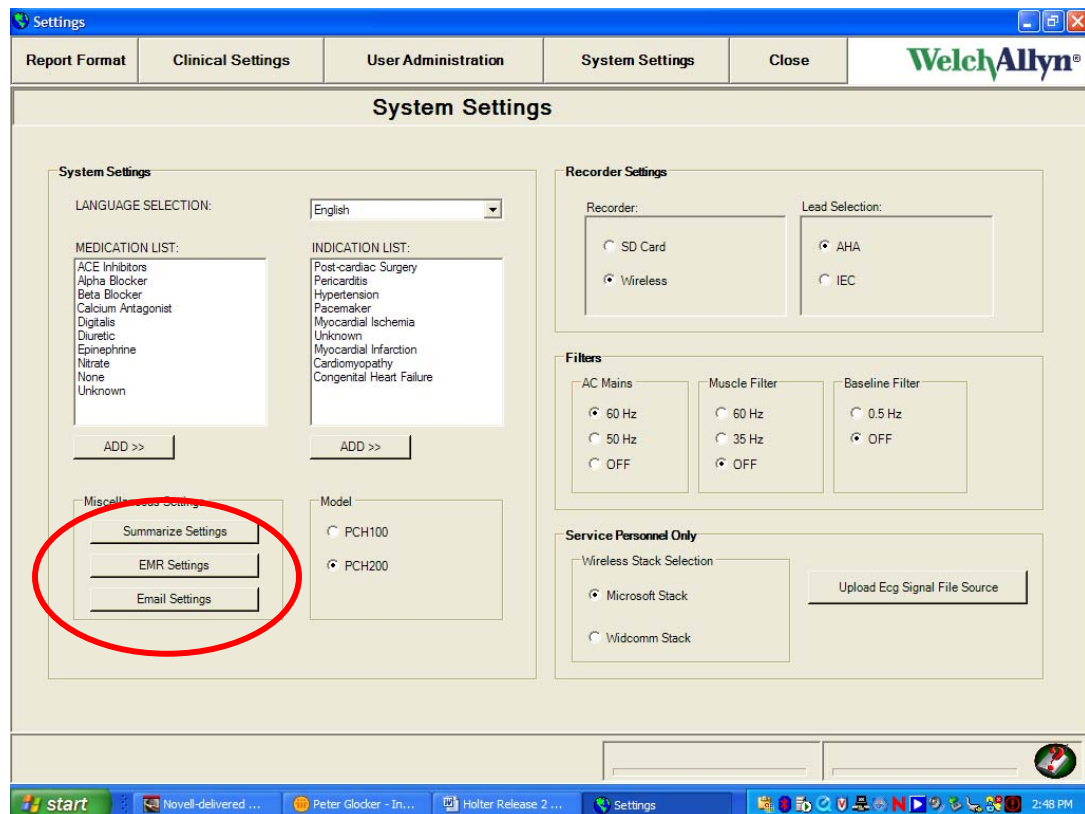


New Product Features with Release ver 1.1.1.0

PCH100 and PCH200

1. The HR100 Holter recorder can be programmed to record up to 48 hours - only for recorder serial numbers after HR100-1278, firmware version 18 (shipments after September 2006)
2. The HR300 Holter recorder
 - a. Program options - 24 or 48 hours at 200 samples per second
 - b. Higher sample rates of 500 and 1,000 sample per second can be selected but the recording times are limited to 24 hours and will require a higher capacity storage SD card of 1 GB
3. Report summarization – With this release of software, the memory size of a 24-hour study will be reduced to 64 MB and a 48-hour study will be 128 MB. Since these are still very large files, the summarization feature will convert an existing report (not including full disclosure) to a pdf. Note: Summarization deletes the raw data, with only the .pdf of the report remaining! Typical files sizes for the .pdf will be 4 MB.

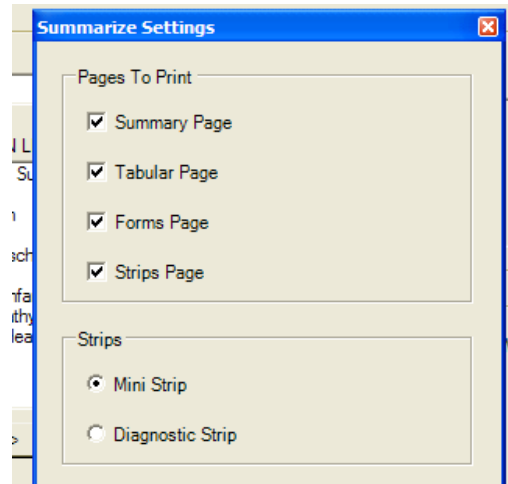
To program this option a tab, “Summarize Settings”, has been added to the System Settings tab.



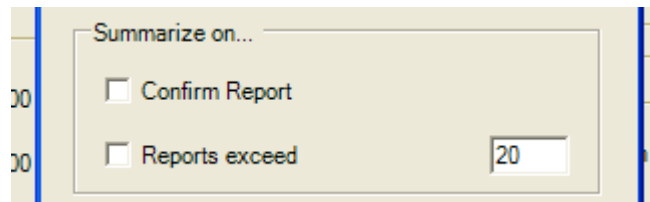
WelchAllyn[®]

Advancing Frontline Care[™]

- a. .pdf software is automatically added as part of the software installation process
- b. A list of check boxes is available to select the report pages to Include in a summarization.



- c. The user has three options to summarize a report
 - i. Customer Initiated – default. The option to manually summarize a report will be available from the Inbox for the PCH100, and from the File Cabinet in the PCH200.
 - ii. Automatically at some report count threshold set by the user, e.g. 20 tests. Summarizes the oldest test then deletes the raw data. The user is provided no warning.
 - iii. Automatically when the test is confirmed



- d. Upon summarization, the full report (the raw data) will be deleted
 - e. Summarized reports will be listed in the inbox or the File Cabinet, with a status indicating that they have been summarized.
4. A “File Link” functionality has been added to export tests to patient electronic records. As part to the Export process the reports are converted into a .pdf for export.

To program this option, a tab “EMR Settings”, has been added to the System Settings tab (see first image above). Options include:

- a. .pdf software is automatically added as part of the software installation process
- b. Define output directory
- c. “Report Date” is set on the creation of a new Test
- d. Interp Date is set on “New Interpretation”, and “Update to a Report”
- e. The exported file name is a concatenation of substrings, where each substring is separated by a delimiter. The substrings used to build the exported file’s name is configured by selecting which items from the list below will be used. The delimiter used to separate each substring can also be configured:
 - i. Report Type
 - ii. Patient ID
 - iii. Last Name
 - iv. Report Date and Time
 - v. Report ID
 - vi. Interpretation Date and Time
 - vii. The file delimiter character.

EMR Settings

File output directory:

File format

Report type

Patient ID

Report Date/Time (yyyyMMddHHmss)

Report ID

New Interpretation Date/Time (yyyyMMddHHmss)

Example (minus extension)

ECG_ZZZZ01_20040125055634

Delimiter

-

#

None

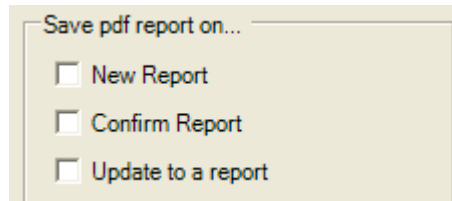
Other

- f. Triggers – Triggers for Exporting will consist of the following (any combination of the three triggers is possible)
 - i. Initial report upload
 - ii. Automatically when confirmed

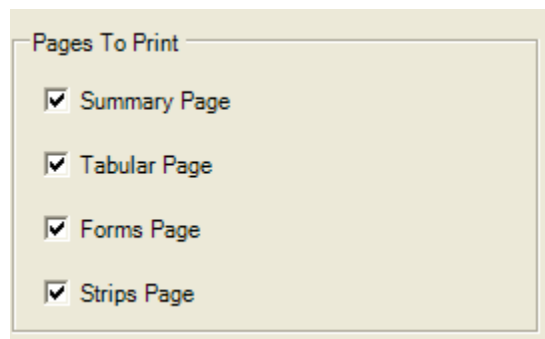
WelchAllyn[®]

Advancing Frontline Care[™]

- iii. Update to Report - Automatically if the report has been changed or interpretation modified



- g. A list of check boxes will be available to select the pages to Include in the export of the .pdf to the EMR.

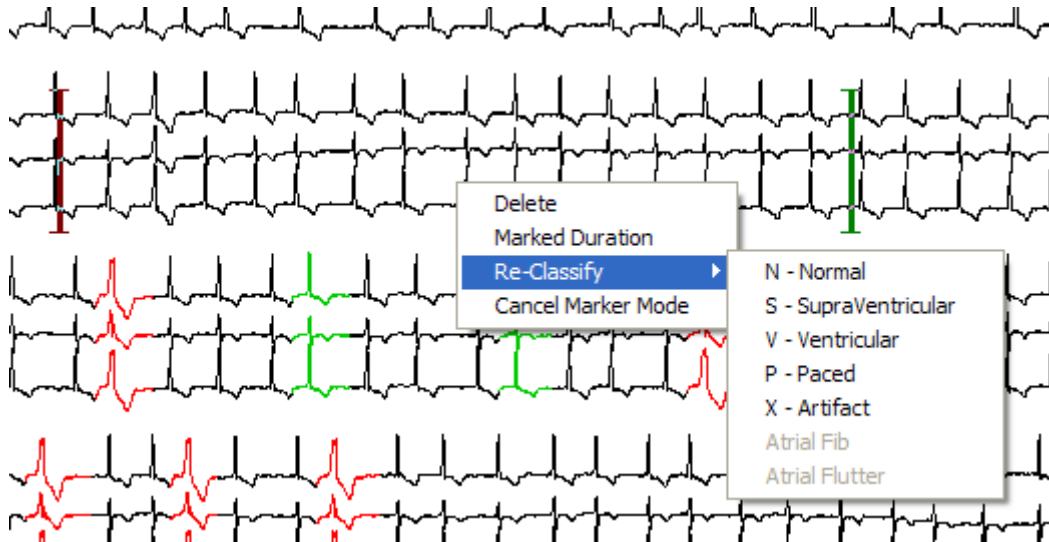


- 5. With color printers the report will print in color
- 6. Algorithm update - improved beat detection in regions of low amplitude and better noise rejection capability

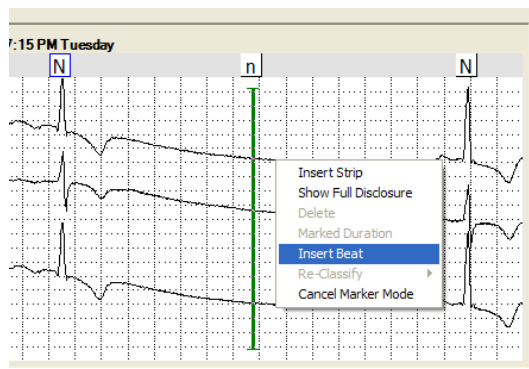
Changes for the PCH200 Only

- 1. In the RR tab under Arrhythmia Review or Full Disclosure, mark off regions to relabel the beats in regions of data, mark regions of afib and flutter or delete artifact. Identify regions by placing the cursor at the start of the region and pressing the "Enter" key. A second green bar appears, position at the end of the region (even across multiple pages). For precise control, use the Ctrl key and left or right arrow. Select right mouse for the options.
 - a. Relabel beats in the marked region, Normal (N), Supraventricular (S), Ventricular (V), Paced (P), Artifact (X)
 - b. Automatic SVE's will be relabeled in Afib marked regions
 - c. The printed report will list total number of Afib Episodes and total duration. Statement would be "There were X Afib episodes with total duration xxxx minutes."

- d. Summary Preview will display the additional Afib information only in the Narrative Summary view. Statement “There were X Afib episodes with total duration xxxx minutes.”
- e. Marked Duration – provides the time interval in the selected region



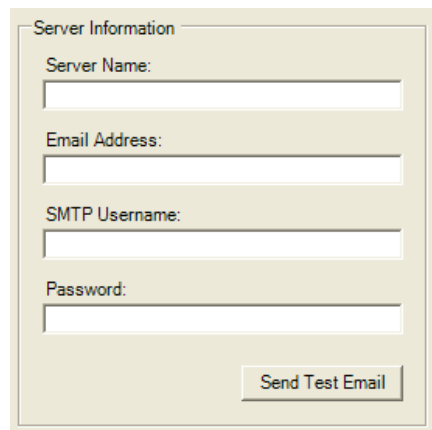
- 2. Insert beat capability for missed QRS detections generally due to low amplitude recordings – available in Arrhythmia mode
 - a. Point cursor to missed QRS detection
 - b. For precise control, use the Ctrl key and left or right arrow.
 - c. Select right mouse control and Insert Beat – a neat label, lower case n is added. Highlight using the right mouse control to change as necessary, e.g. S or V



3. Email report – Automatically converts the selected report into a .pdf.

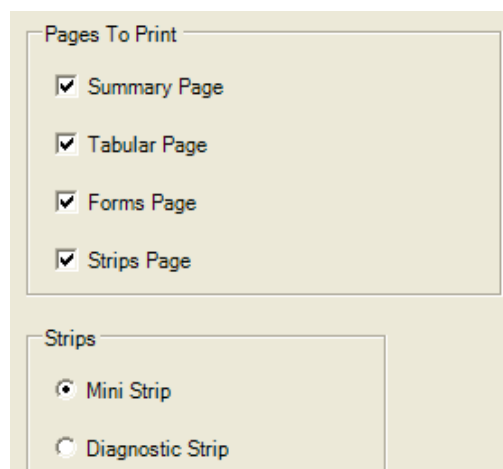
To program this option a tab, “Email Settings”, has been added to the System Settings tab (see first image above). Options include:

- a. .pdf software is automatically added as part of the software installation process
- b. Configuration settings
 - i. Server Name - This is the SMTP server name for the customer’s email service. Example would be “smtp.twcny.rr.com”.
 - ii. Email address – sender’s email address which is entered into the “From” field on the email
 - iii. SMTP Username and Password are optional



The screenshot shows a web form titled "Server Information". It contains four text input fields: "Server Name:", "Email Address:", "SMTP Username:", and "Password:". Below these fields is a button labeled "Send Test Email".

- c. Report format for email



The screenshot shows a web form with two sections. The first section is titled "Pages To Print" and contains four checked checkboxes: "Summary Page", "Tabular Page", "Forms Page", and "Strips Page". The second section is titled "Strips" and contains two radio button options: "Mini Strip" (which is selected) and "Diagnostic Strip".

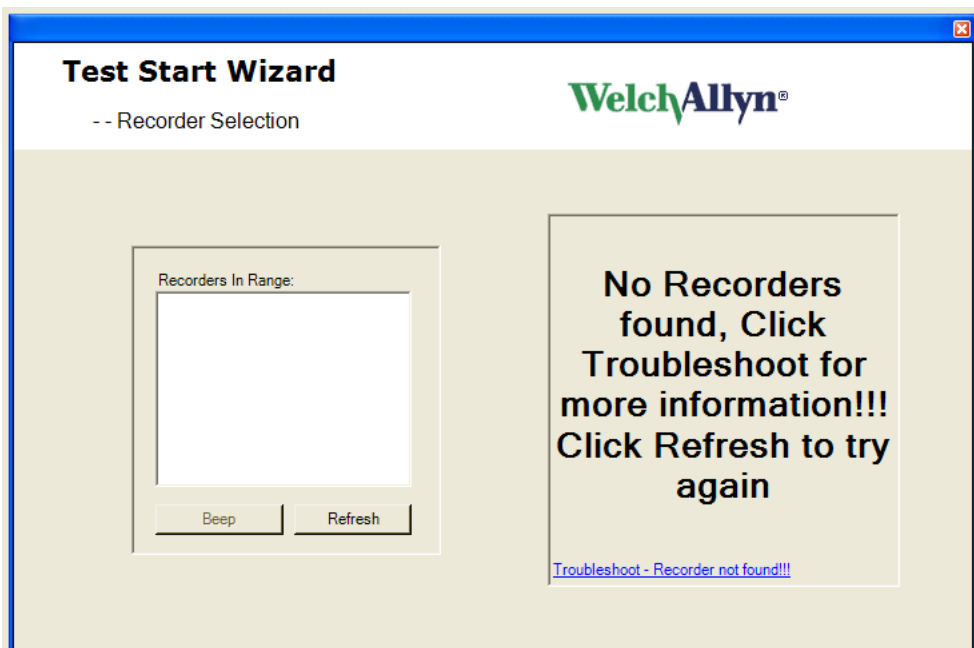
User Interface Improvements

PCH100 and PCH200

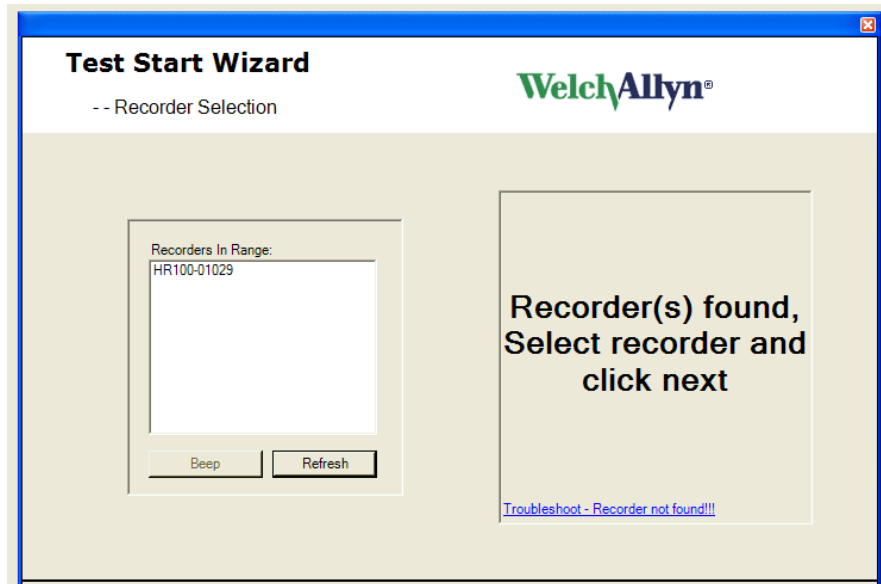
1. On the Acquisition wizard, only the Next or the Finish command button to be displayed at one time, eliminates the potential confusion between using both buttons on the same screen. The Next or Finish command button will be in the same screen location.
2. When printing a Report, the “Print in progress” dialog box does not appear until after the user selects the printer to be used from the “Print” Common Dialog box. Sometimes this dialog box would block the ability to select the printer.
3. Test Startup Wizard, in Wireless mode – New screens have been added to simplify the workflow. Changes include:
 - a. To reduce the time it takes to start a test, the wireless search for the recorder starts while the user is entering patient data entry screen
 - b. Recorder Selection Page has been changed
 - i. “Change help-Find Recorder” to “Troubleshoot - Recorder Not Found !!!”
 - ii. Added a panel on the right side of the screen that show progress.
 1. Initially it displays “Searching for recorder, please wait”. This message keeps flashing until it finds the recorder or no recorder is found.



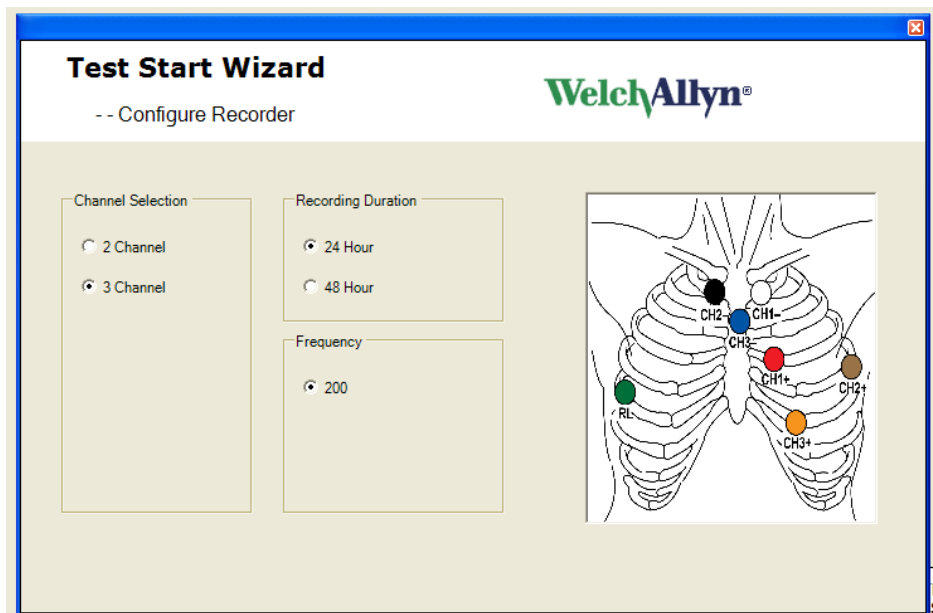
- iii. If the recorder wireless is not available, the screen displays “No Recorders found, Click Troubleshoot for more information !!! Click Refresh to try again.”



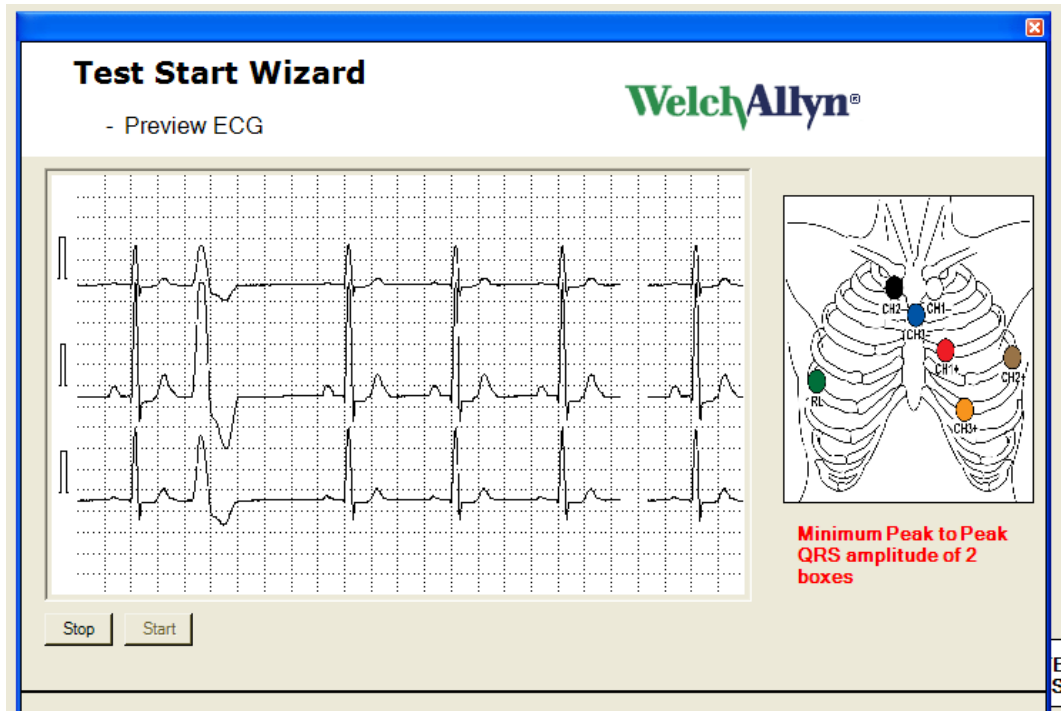
- iv. Selecting the trouble shooting dialog at the bottom of the panel will display the following suggestions:
- Verify SD card is inserted into recorder.
 - Verify that a new battery has been inserted, wait for the 2 beeps.
 - Click on Refresh.
 - Verify that a Bluetooth USB device light is active (LED will be blinking or on). If not - Close application, remove and insert Bluetooth USB device into the same port and restart the process.
 - If the problem persists, contact technical support.
- v. Upon success, one or more recorders will be listed in the left hand pane. Displayed in the right hand pane will be: “Recorder(s) found, Select recorder and click next”



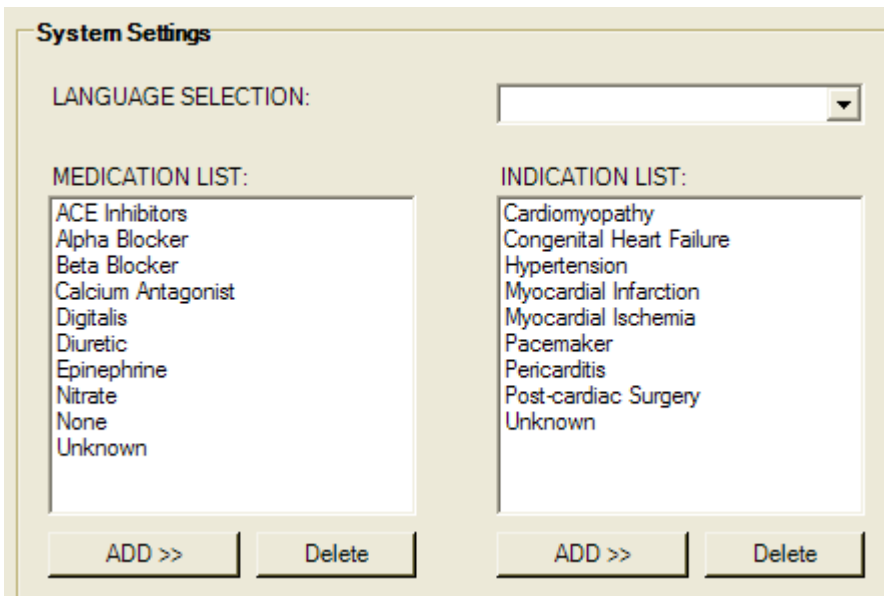
- c. A new Configuration Page includes:
 - i. Channel Selection – 2 or 3 channel
 - ii. Recording Duration – 24 or 48 hours
 - iii. Sampling rate – additional selections include 500 and 1,000 for the HR300
 - iv. Lead placement graphic



- 4. To the ECG Preview display we've added
 - a. Grid
 - b. Message flashing to remind operator amplitude requirement "Minimum Peak to Peak QRS amplitude of 2 boxes."



5. Under System Settings for Medications and Indications
 - a. A delete option has been added
 - b. Meds and indications are listed alphabetically



International Specific Changes

1. System Settings will allow the configuration of the Torso image to be displayed. It will allow either the AHA or the IEC to be selected.
2. International languages supported: French, German, Danish, Dutch, Finish, Greek, Italian, Norwegian, Polish, Portuguese, Spanish, and Swedish.

Service or Installation Changes

1. Service Pack 2 on XP operating systems is no longer required for Bluetooth operation. Installation instructions have been amended.
2. Mechanism to move the software license to another computer due to a computer problem or transferring to a new computer. Requires PC to have internet access and user to initiate transfer license from within the application.
3. Recorder Firmware Update – this is a new service function to update the software programmed in the recorder to take advantage of new features or reliability improvements, e.g. update old HR100's to support 48 hour recording.
4. For logo's we now support the use of .bmp image types as well as .jpg
5. Renamed the Export function for patient tests (available from context sensitive menu found in "Inbox", and "File Cabinet") to "Export for Technical Support Only"
6. Upgrades
 - a. .pdf software to support Report Summarization, EMR Export and Email is added during the upgrade
 - b. Installation program installs for all users – previous released installation version only installed for Admin user and would allow that admin to use the product. SB-0002 (Application Is Not Available for All Users) will not be required with this new release.

New Part Numbers

704525 replaced by	101510 PCH100 Stand-alone Holter S/W w/o Rec
704526 replaced by	101511 PCH100 LAN - 3 USER Holter S/W w/o Rec
704527 replaced by	101512 PCH200 STANDALONE Holter S/W w/o Rec
704528 replaced by	101513 PCH200 LAN - 3 USER Holter S/W w/o Rec



Advancing Frontline Care™

WelchAllyn[®]

Advancing Frontline Care[™]