


Document Description: TSB-CP150 V2.00.06 SOFTWARE RELEASE	Document Number: 20014125 Version: A
	Page 1 of 3
Printed or electronic versions of this document not accessed directly from the designated Welch Allyn Controlled Quality Information System are For Reference Only.	

Technical Service Bulletin

Product: CP150 Electrocardiograph **Date:** 2015-12-27

Subject: CP150 2.00.06 Software Update – Save to Network Location & Rhythm Print Stutter Solutions

HW Version(s) Affected: All	SW Version(s) Affected: 2.00.05 and earlier
------------------------------------	--

Serial Numbers Affected: All	Lot or Date Code Affected: N/A
-------------------------------------	---------------------------------------

Classification: As Needed

Distribution: Customer Care Product Service Field Service
 ASPs Distributors Customers Company Confidential

THIS DOCUMENT CONTAINS CONFIDENTIAL INFORMATION

It can be distributed or made available to only those individuals, companies, and organizations which have current Welch Allyn Confidentiality Agreements, and have a need to know.

Training Required: Yes No

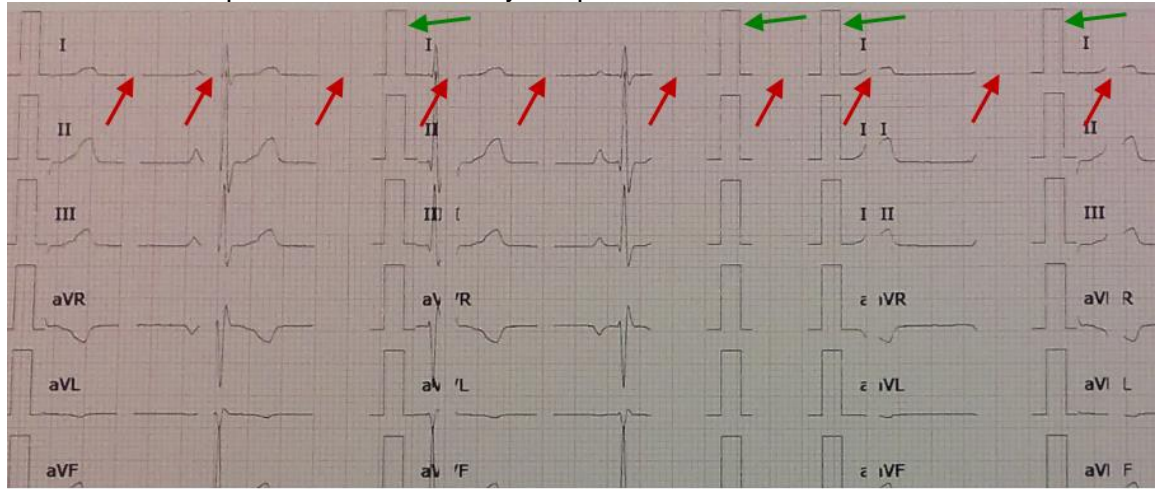
Summary: The CP150 firmware update, version 2.00.06, is a maintenance release that is intended to resolve the following two issues:

1. **Save to network location:**
In all past versions of the CP150 firmware, the ability of the CP150 to mount to a remote file location was not always successful. This update will allow the mounting to always be successful when the following conditions are met:
 - a. Shared File Computer and CP150 are both on the same subnet
 - b. ICMP (Internet Control Message Protocol) is enabled
 - c. Shared File Computer can be pinged using the Host Name
 - d. Shared File Computer is using NTLM v2
The update also adds the \$ character to the On-Screen Keyboard to support mapping to hidden folders.
2. **Rhythm Print Stuttering:**
When performing a Rhythm (continuous) ECG on a CP150 with firmware version 2.00.05 installed, the device may produce a rhythm print that continuously starts, stops and restarts, producing gaps in the data. This update will resolve this issue.



Printed or electronic versions of this document not accessed directly from the designated Welch Allyn Controlled Quality Information System are For Reference Only.

An example of the affected Rhythm printout is shown below:



← = Calibration Pulse / Restart of Rhythm Print

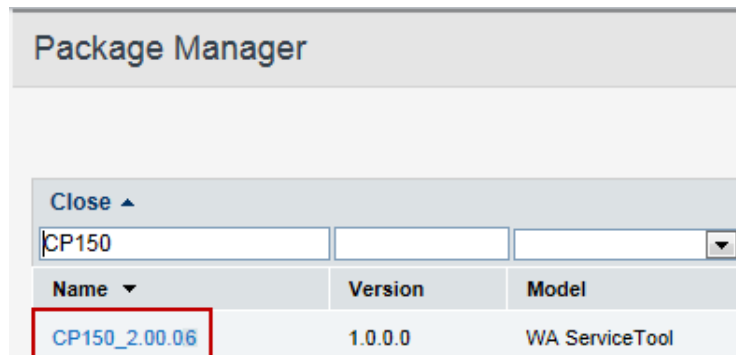
↗ = Gap in data

NOTE: This issue does not occur on firmware versions prior to 2.00.05.

Solution:

Customer Service / Technical Support:

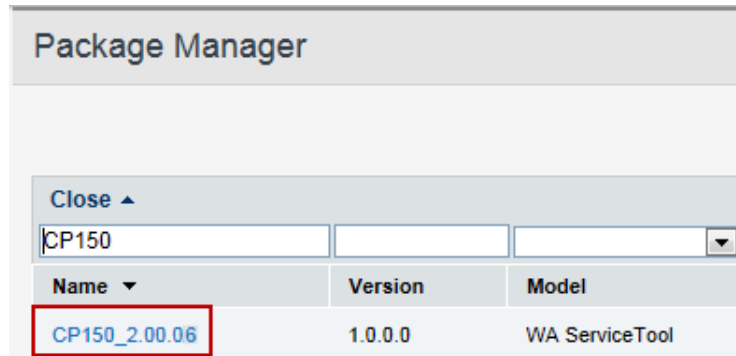
Provide the 2.00.06 update for devices exhibiting either, or both, of these issues. The update will be deployed to customers via PartnerConnect and the Welch Allyn Service Tool. Deploy Software Package **CP150_2.00.06**:



THIS INFORMATION IS THE PROPERTY OF WELCH ALLYN, INC. AND AS SUCH SHALL NOT BE REPRODUCED, COPIED, OR USED AS A BASIS FOR THE MANUFACTURE OR SALE OF EQUIPMENT OR DEVICES WITHOUT THE EXPRESS WRITTEN PERMISSION OF WELCH ALLYN, INC.

Product Service / Repair Centers:

All CP150 loaners, and devices received for repair, will be updated to version 2.00.06. Deploy Software Package **CP150_2.00.06** to the repair bench PC that contains the Welch Allyn Service Tool used to update the CP150 devices:



Update the CP150 using the Welch Allyn Service Tool.

After the device has been updated and reboots, confirm that the software is at version 2.00.06 by going to Settings / Device / About:

- **Xloader version: 2.00.06**
- **Bootloader version: 2.00.06**
- **Apps version: 2.00.06**

Version	Sec, Pg, Para Changed	Change Made	Date Version Created	Version Created By (initials)
A	N/A	Initial Release	2015-12-17	SMB

THIS INFORMATION IS THE PROPERTY OF WELCH ALLYN, INC. AND AS SUCH SHALL NOT BE REPRODUCED, COPIED, OR USED AS A BASIS FOR THE MANUFACTURE OR SALE OF EQUIPMENT OR DEVICES WITHOUT THE EXPRESS WRITTEN PERMISSION OF WELCH ALLYN, INC.