


Document Description: TSB-WAST - BRAUN 6000 PLUGIN	Document Number: 20014043 Version: A
	Page 1 of 5
<small>Printed or electronic versions of this document not accessed directly from the designated Welch Allyn Controlled Quality Information System are For Reference Only.</small>	

Technical Service Bulletin

Product: WAST **Date:** 2015-07-24

Subject: TSB-WAST - Braun 6000 Plugin

HW Version(s) Affected: NA **SW Version(s) Affected:** 1.8.0.0

Serial Numbers Affected: NA **Lot or Date Code Affected:** NA

Classification: As Needed

Distribution: Customer Care Product Service Field Service
 ASPs Distributors Customers Company Confidential

THIS DOCUMENT CONTAINS CONFIDENTIAL INFORMATION

It can be distributed or made available to only those individuals, companies, and organizations which have current Welch Allyn Confidentiality Agreements, and have a need to know.

Training Required: Yes No


Summary: A new plugin for the WelchAllyn Service Tool has been released to support Braun 6000 Pro Thermoscan thermometer. The plugin allows the service tool to read device information, upgrade firmware, perform accuracy verification, and configure the thermometer. The plugin will be deployed to all internet connected PCs running the Welch Allyn Service Tool version 1.8.0.0

Issue: The plugin will be auto deployed from PartnerConnect (Axeda) to all connected PCs running WAST 1.8.0.0, as it is not currently included with the WAST 1.8.0.0 installer. To automatically download and install the plugin WAST version 1.8.0.0 must be installed and the PC must have an active internet connection.

If the WAST is not installed or an older version is installed it will be necessary to download WAST 1.8.0.0 from www.welchallyn.com and install.

PartnerConnect batches auto deployments possibly preventing customers with a dialup or otherwise intermittent internet connection from receiving the plugin. Customers may contact Technical Support and request the plugin package be manually pushed to their PC once connected to the internet.

Action: Technical Support may manually push the Braun6KPlugin1.1.0.0 package to customers who are unable to receive the auto deployed package.

Document Description: TSB-WAST - BRAUN 6000 PLUGIN	Document Number: 20014043 Version: A
	Page 2 of 5
Printed or electronic versions of this document not accessed directly from the designated Welch Allyn Controlled Quality Information System are For Reference Only.	

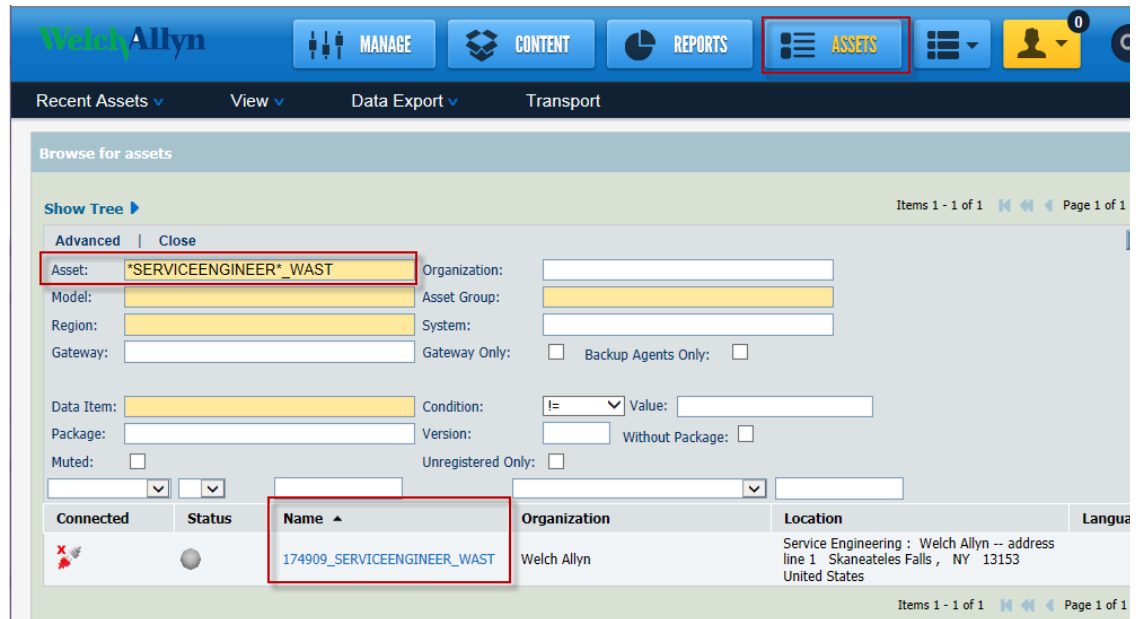
Service Strategy: Service Engineering will deploy the plugin, configuration & help files to all connected installations of WAST 1.8.0.0. Customers that are offline line will need to connect their PCs running WAST 1.8.0.0 to the internet and contact Tech Support to receive the plugin. Customers will need the plugin to change the configuration of their Braun Pro 6000 ThermoScan thermometers as described in the Braun 6000 DFU (106416 BRAUN PRO6000 CD/DFU W/O TC). It is anticipated the plugin will be included with the WAST installer at the next revision of the installer.

References 50011712 Ver. B, SWF: WAST Braun-6000 Plug-In v.1.1.0.0
80019596 Ver. B, WAST Braun 6000 Help Files
60070716 Ver. A, SRN: WAST Braun-6000 Plug-In v1.1.0.0
60051519 Ver. F, WAST Unresolved Anomalies Report

Required Materials: The following files are included in the Braun6KPlugin1.1.0.0 package on PartnerConnect:
Braun 6000.dll
Braun 6000_Config.xml
Braun 6000.chm

Procedure: Manually push Braun6KPlugin1.1.0.0

1. Log on to PartnerConnect: <https://welchallynsolutions.com>
2. Go to the Assets tab.
3. In the Asset field enter the customer’s computer enclosed with asterisks, followed by “_WAST”, click **Search**. Example: *SERVICEENGINEER*_WAST.



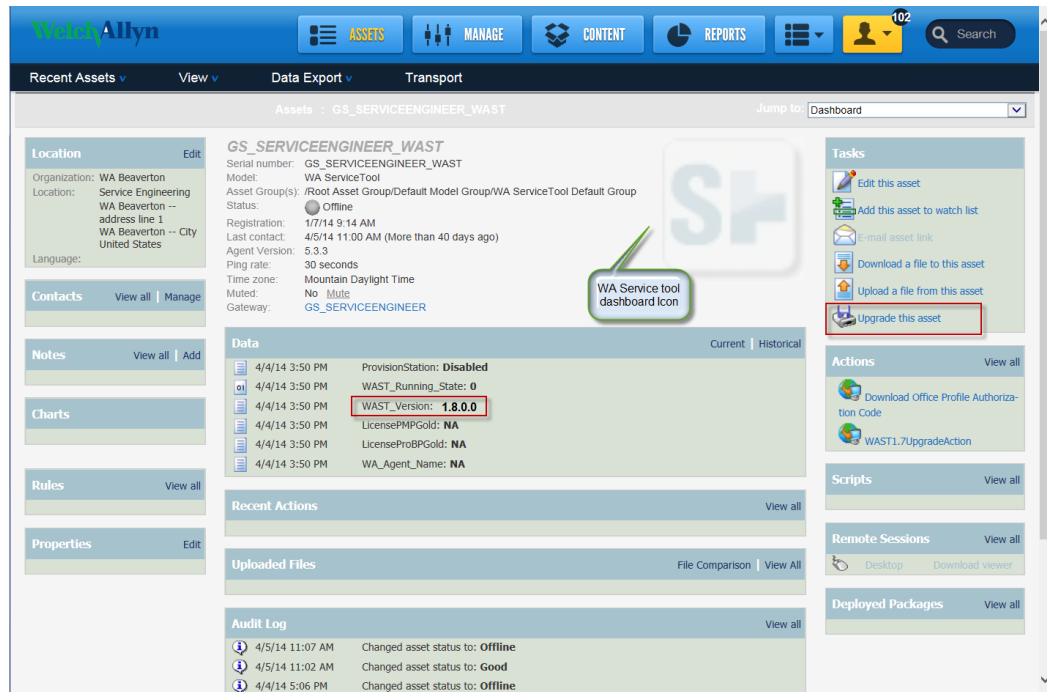
4. Select the customer’s computer by clicking on the customer’s computer name in the list, with the “_WAST” ending, to open the WA Service Tool dashboard screen.
5. Confirm the WAST version is 1.8.0.0. If WAST version is earlier than 1.8.0.0 download and install version 1.8.0.0.

Data		Current Historical
	7/23/15 7:58 AM	ProvisionStation: Disabled
	7/24/15 1:04 PM	WAST_Running_State: 1
	7/24/15 11:50 AM	WAST_Version: 1.8.0.0
	7/23/15 7:58 AM	LicensePMPGold: Activated
	7/23/15 7:58 AM	LicenseProBPGold: NA

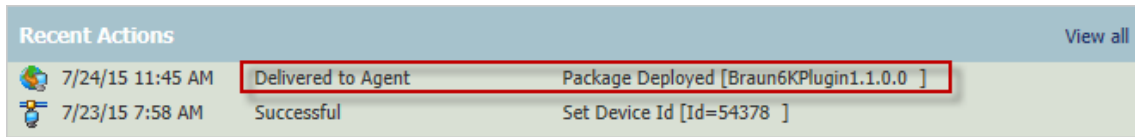
6. Open the list of available packages by clicking the upgrade this asset icon on the right side of the dashboard, select “**Braun6KPlugin1.1.0.0**”.



Printed or electronic versions of this document not accessed directly from the designated Welch Allyn Controlled Quality Information System are For Reference Only.




7. Confirm the package appears in the recent actions pane (center screen). The initial status will be; waiting to deliver. After a few minutes the status will change to: Delivered to agent Package Deployed [Braun6KPlugin1.1.0.0].



If successful the audit log will confirm the script was downloaded and the Braun6K1.1.0.0.wsf Script ran. The script will install the Braun 6000.dll and Braun 6000_Config.xml to the ...\\Welch Allyn\\WelchAllyn Service Tool\\Plugin folder and the Braun 6000.chm to the ...\\Welch Allyn\\WelchAllyn Service Tool\\Help folder



Once installed the version of the service tool will change to 1.8.1.0

Document Description: TSB-WAST - BRAUN 6000 PLUGIN	Document Number: 20014043 Version: A
	Page 5 of 5
Printed or electronic versions of this document not accessed directly from the designated Welch Allyn Controlled Quality Information System are For Reference Only.	

Data		Current Historical
	7/23/15 7:58 AM	ProvisionStation: Disabled
	7/24/15 1:04 PM	WAST_Running_State: 1
	7/24/15 11:50 AM	WAST_Version: 1.8.1.0
	7/23/15 7:58 AM	LicensePMPGold: Activated
	7/23/15 7:58 AM	LicenseProBPGold: NA

Version	Sec, Pg, Para Changed	Change Made	Date Version Created	Version Created By (initials)
A	N/A	Initial Release	D*	GCS

THIS INFORMATION IS THE PROPERTY OF WELCH ALLYN, INC. AND AS SUCH SHALL NOT BE REPRODUCED, COPIED, OR USED AS A BASIS FOR THE MANUFACTURE OR SALE OF EQUIPMENT OR DEVICES WITHOUT THE EXPRESS WRITTEN PERMISSION OF WELCH ALLYN, INC.	
20014043A TSB-WAST - BRAUN 6000 PLUGIN MPD FCD-1482 Rev 8	