

Title: Welch Allyn Holter System Windows 8 Install

Service Bulletin Date: 24-Jan-2013

Application: PCH Software

Description:

This process is for installation of the Welch Allyn Holter System on Windows 8. This service bulletin displays the differences in installation on Windows 8. Please refer to 006-700-0124 (Welch Allyn Holter System Installation Instructions) for full instruction

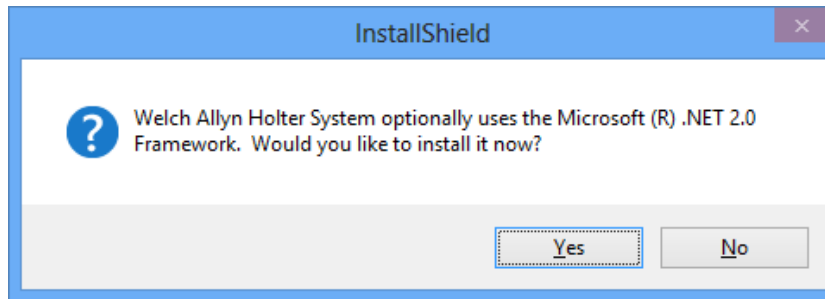
The first version available for Windows 8 is 1.7.2.0. Previous versions of software are not compatible with Windows 8.

Note: User **MUST** have internet access during install process.

Note: If upgrading Operating System, uninstall Holter system prior to upgrade and then install the latest version of Welch Allyn Holter System.

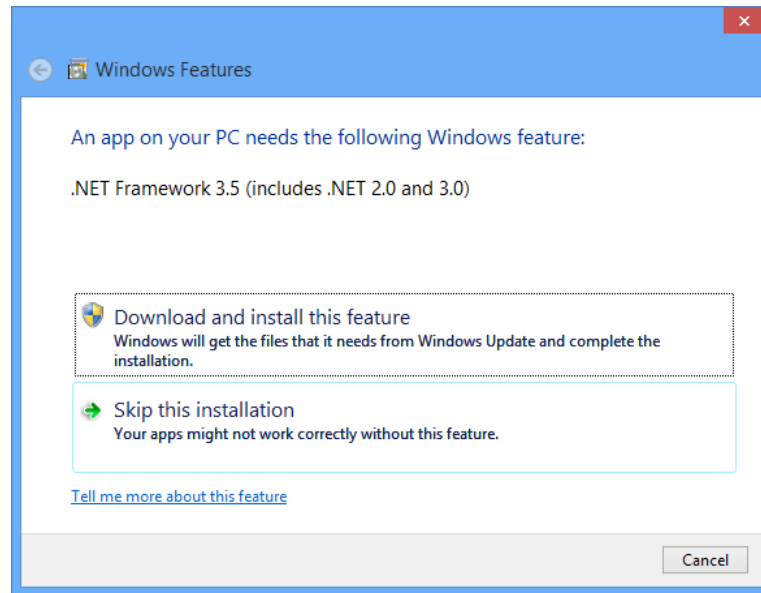
If internet access is not available refer to <http://msdn.microsoft.com/en-us/library/hh506443.aspx> for more details.

1. When the installer first starts the user will be prompted to install Microsoft .NET Framework 2.0. Select "Yes".

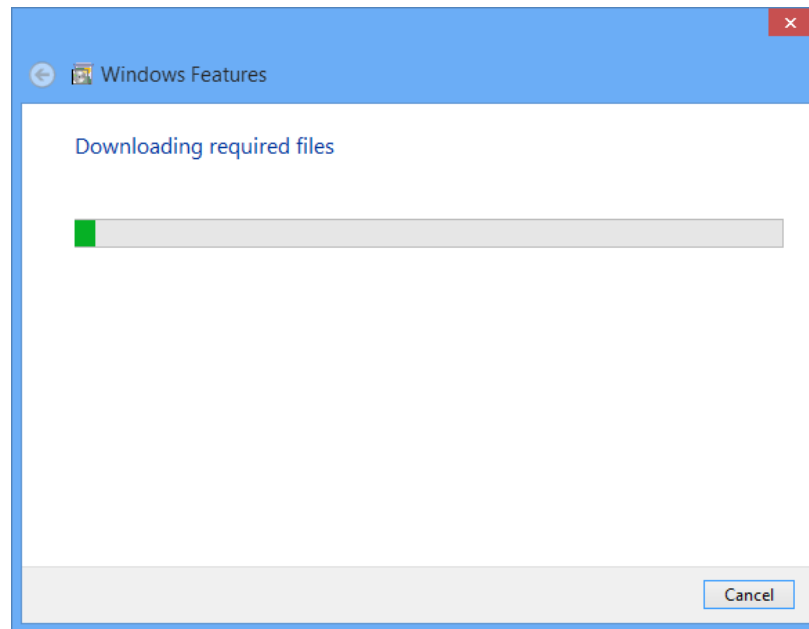


2. The Microsoft .NET Framework 2.0 will not install from disk on Windows 8, it will go to the internet to download the .NET Framework 2.0. Click on “Download and install this feature”

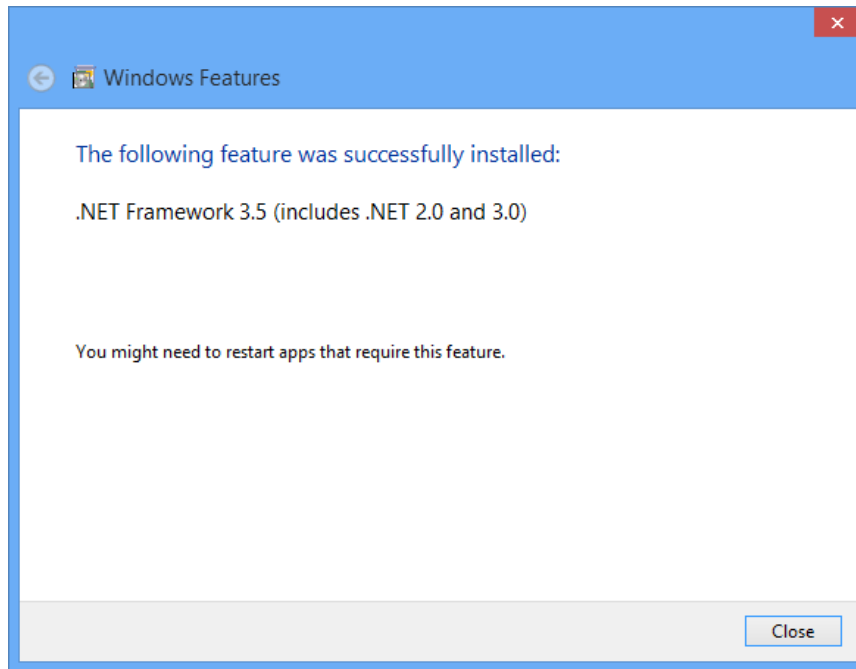
Note: This step requires Internet access. Without internet access the installer will fail.



3. The download and installation of the Microsoft .NET Framework 2.0 will take a few minutes.



4. Once the installation of the Microsoft .NET Framework 2.0 is complete click close



5. Note: During the SQL Server Express installation, the user will see the following message twice. Click "Run the program without getting help".

