

The Welch Allyn Elite™ Electronic Stethoscope

Hear more of the sounds you need and less of the sounds you don't.

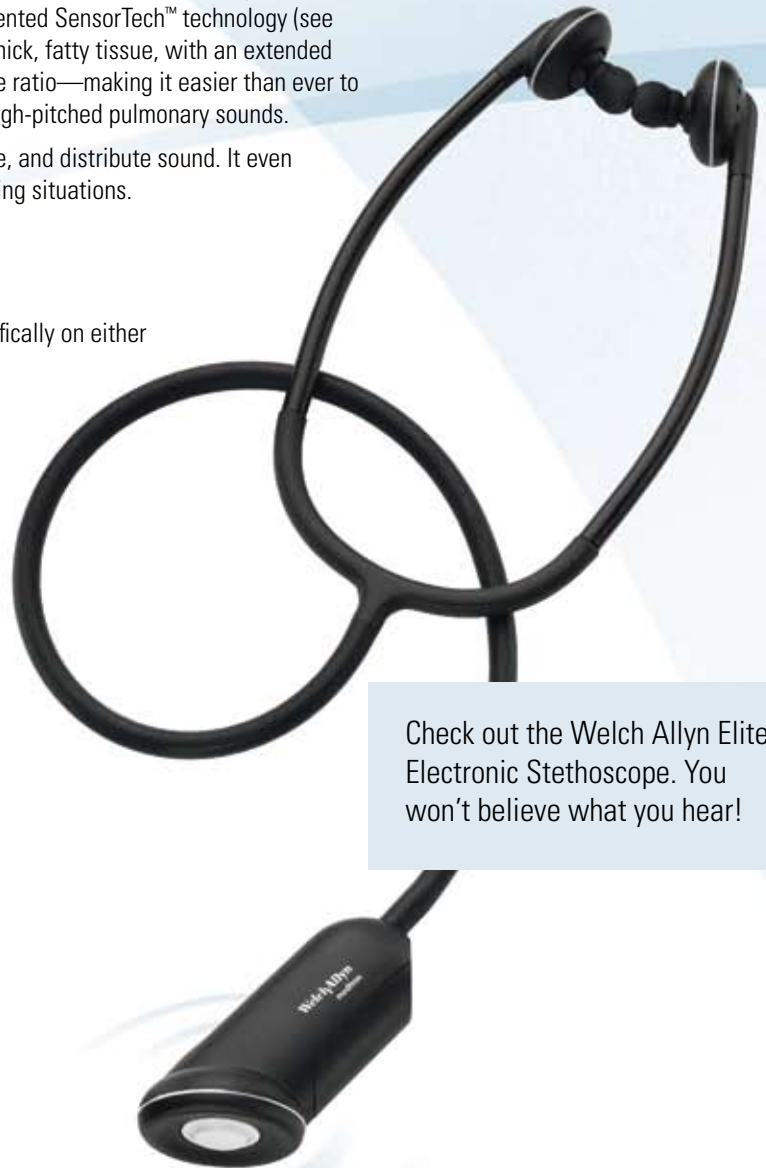
The Welch Allyn Elite Electronic Stethoscope allows you to hear more of the sounds you need to hear and less of the sounds you don't. The scope boasts patented SensorTech™ technology (see inset) which provides exceptional sound quality even through thick, fatty tissue, with an extended frequency range (20-20,000 Hz) and an excellent signal-to-noise ratio—making it easier than ever to detect faint crackles and wheezes, low diastolic murmurs, or high-pitched pulmonary sounds.

In addition, optional PC-based software lets you record, analyze, and distribute sound. It even allows for co-listening, which is perfect for teaching or consulting situations.

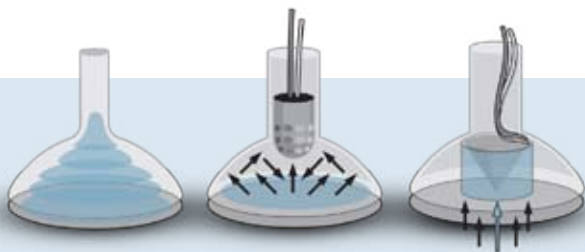
The Welch Allyn Elite Electronic Stethoscope

- Two-position frequency selection switch lets you focus specifically on either high or low frequencies for greater diagnostic potential.
- SensorTech technology provides unmatched clarity of heart and pulmonary sounds.
- High signal-to-noise ratio improves sound quality.
- Variable volume control offers powerful amplification, even in noisy environments.
- Optional cable and accessories facilitate co-listening, teaching and PC connection.
- Adjustable binaural and ear tips for all-day comfort.
- One long-life lithium-ion battery lasts up to 140 hours.
- On/off button with power-saving timer function.
- One-year warranty.

5079-405 Welch Allyn Elite Electronic Stethoscope
5079-402 Elite Electronic Analyzer software w/ECG
5079-401 Elite Electronic Distributor
5079-414 Elite Headset (for use with Distributor)



Check out the Welch Allyn Elite Electronic Stethoscope. You won't believe what you hear!



Conventional
Stethoscope

Amplified
Stethoscope

Elite Electronic
Sensor-Based Stethoscope

Transducer placement

Welch Allyn Elite Electronic sensor is placed at the patient interface for more focused sound pickup, eliminating unwanted vibration, resonance, and sound loss.

4341 State Street Road, P.O. Box 220, Skaneateles Falls, NY 13153-0220 USA
(p) 800.535.6663 (f) 315.685.3361 www.welchallyn.com

© 2009 Welch Allyn MC6394

WelchAllyn®

Advancing Frontline Care™