

Welch Allyn Holter Systems Specifications

Holter Recorder Characteristics

	HR-100	HR-300
Length	96.5 mm	112 mm
Width	56 mm	78 mm
Height	18 mm	36 mm
Weight*	198 g	425 g
Keyboard (HR 300 only)	Elastomer keypad with navigational and soft menu keys.	

*with battery (or batteries) and patient cable

Operation

	HR-100	HR-300
Power Source	one size AA (size LR6) alkaline battery	two size AA (size LR6) alkaline batteries
Sampling Rate	200 sps	200, 500, 1000 sps
Recording Period	Maximum 48 hours continuous	
Storage Capacity	Minimum 256 MB	
Storage Period	Data remains valid for >5 years or until memory card is initialized	
Battery Life	48 hours or until disk is full	
Pacemaker Detection	ANSI/AAMI EC38-1998	
Effective A/D Resolution	2.5 mV	.5 mV
Dynamic Range	+/- 300 mV	
Frequency Response	0.05 to 100 Hz	0.05 to 250 Hz
Operating Altitude	700-1060 millibars	
Storage Altitude	700-1060 millibars	

Conforms to Regulatory Standards

International Electro-technical Commission	CAN/CSA C22.2 No. 601.1-M90 IEC 60601-2-47, 2001; IEC 601-1-2, conforms to EN 55011, IEC 801-2, and IEC 801-3; EN 61000-4-2, 1999; EN 61000-4-3, 1995
American Advancement of Medical Instrumentation	ANSI/AAMI EC38-1998
Australian Electromagnetic Compatibility	AZ/NZS 3200-1-0

Device Classification

Meets or exceeds Council Directive 93/42/EEC, MDD, Class IIb	
AECG Device Type	Type I
EMC	Class 2B, Type BF

System Software Specifications

Minimum System Requirements

- 1024 x 768 screen resolution
- Windows® 2000, XP
- 300 MHz Pentium processor or faster
- 256 MB RAM
- 40 GB hard drive
- Mouse and keyboard
- Compact Disc reader
- Printer with 300 dpi resolution
- USB 1.1 or 2.0 – 2 USB ports
- CD writer or equivalent for data backup

Ordering Information

Software

101510	PCH-100 Stand-alone Holter Software without Recorder
101511	PCH-100 LAN – 3-user Holter Software without Recorder
101512	PCH-200 Stand-alone Holter Software without Recorder
101513	PCH-200 LAN – 3-user Holter Software without Recorder

Holter Recorders

401702	HR-100 Holter Recorder with 5-Lead Patient Cable
401703	HR-100 Holter Recorder with 7-Lead Patient Cable
401705	HR-300 Holter Recorder with 7-Lead Patient Cable

Accessories

08113-0002	3-channel Holter Hook-up Kit
45002-0000	Holter Electrodes (500/case)
08240-0000	Disposable Holter Pouch
704546	5-Lead Patient Cable, IEC, HR-100
704548	7-Lead Patient Cable, IEC, HR-100
704550	7-Lead Patient Cable, IEC, HR-300
704553	HR-100 Carrying Case and Straps
704554	HR-300 Carrying Case and Straps
704555	USB Bluetooth Adapter

Welch Allyn South Africa (Pty) Ltd
394 Surrey Ave., Ferndale, Randburg, 2194, South Africa
P O Box 809, Fontainebleau, South Africa, 2032
Telephone: +27 (0) 11 777 7555 Fax: +27 (0) 11 777 7556

Welch Allyn U.K. Ltd
Cublington Road, Aston Abbotts
Buckinghamshire HP22 4ND England
Telephone: +44 (0) 207 365 6780 Fax: +44 (0) 207 365 9694

European Customer Service
Navan Business Park
Dublin Road, Navan, County Meath Ireland
Telephone: +353 46 906 7790 Fax: +353 46 906 7754



Helping you improve patient care.

Welch Allyn
Holter Systems

WelchAllyn®
Advancing Frontline Care™

WelchAllyn®
Advancing Frontline Care™



Choose the software system that gives you the information you need.

Welch Allyn Office Holter Software – PCH-100

EASY TO USE

- Intuitive menus allow you to easily programme your test using the Start Test Wizard

FAST

- Transfer recordings in just minutes – the results can be ready for your immediate review even before your patient leaves the office

DETAILED ANALYSIS

- Highlight key areas for further analysis with our unique summary results presentations
- View a live preview display of the ECG for lead quality verification

POWERFUL

- Format your reports to provide information you need in the format you want
- Adjust clinical parameters to match your practice needs

Welch Allyn Holter Systems – User-friendly, powerful systems that are tailored to meet your needs.

Welch Allyn Holter Systems feature easy-to-use software and recorders that can improve patient compliance due to their lightweight, compact profile. Using Welch Allyn Office Holter software or Welch Allyn Expert Holter software, the systems can be configured with a compact digital recorder featuring 2- or 3-channel recording for a detailed evaluation. Either system provides you with fast, accurate data that helps to streamline your workflow and make your practice more efficient. EMR compatible.

Choose either recorder to work with your preferred software system.



Welch Allyn HR-100

Holter recording in an incredibly small package

- 2- or 3-channel recording
- 24-48 hours of recording time
- Pacer detection
- Wireless transfer of patient's ECG in real time to verify electrode quality and placement



Welch Allyn HR-300

Powerful features for the demanding user

- In addition to the features offered in the HR-100, the HR-300 offers the following:
- Display for real-time ECG preview or test programming
 - Remote initialization
 - Programmable sampling rates of 200, 500 and 1000 sps

Welch Allyn Expert Holter Software – PCH-200

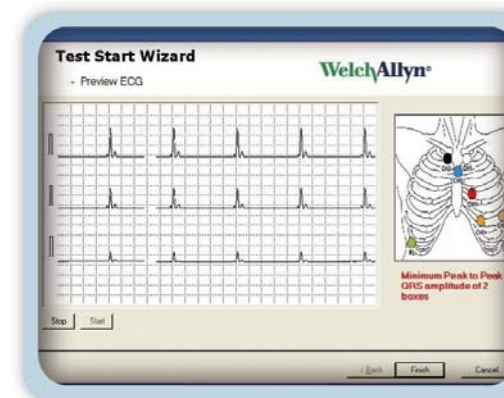
In addition to the features offered in the PCH-100 software, the PCH-200 offers the following:

DETAILED ANALYSIS

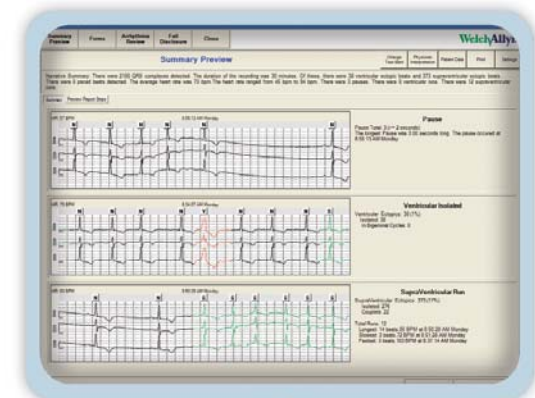
- Review detailed views of results from any entry point: Forms, Arrhythmias, Heart Rate, and FD review modes
- Review and edit down to the beat level from every review mode

COMPREHENSIVE EDITING TOOLS

- Relabel beats individually or as a form
- Manually mark/label/insert ECG strips as required
- Mark and re-label regions as atrial fib/flutter or artifact
- Adjust clinical limits, leads used and filters
- Control speed and resolution of full-disclosure review with Autopaging function
- Record results as you move through the editing process with the floating Report Interpretation Window
- Use the Reanalyze function to eliminate a bad channel
- E-mail Holter reports for review and consultation
- Administrative functions with password log-on controls to support your program for HIPAA compliance



Wireless preview of patient's ECG in real time to verify signal quality and placement



Summary preview of patient ECG highlights serious abnormalities